



Apartment (EPC Rating: D)

HARVARD ROAD LONDON, W4 4EE

Per month

£2,300 Per

ALEXANDER STEER
Estate Agents

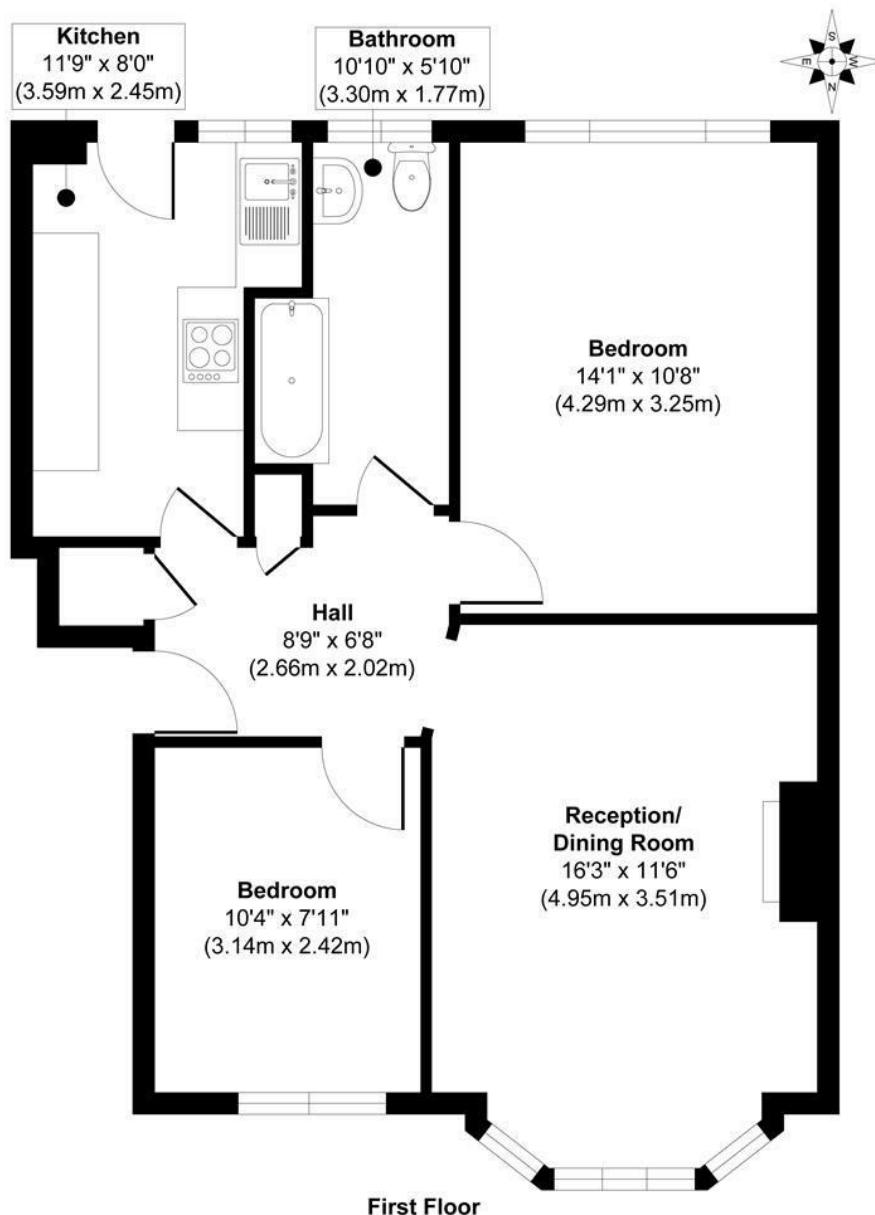


2 BEDROOM APARTMENT LOCATED IN LONDON

A charming 1930s period first-floor apartment on the picturesque Harvard Road, it offers a great blend of comfort and convenience. A well-proportioned property, it enjoys aesthetic features such as a fireplace in the living room, cornicing, picture rails and textured ceilings. There are two spacious bedrooms, a well equipped galley kitchen and bathroom.

The location is particularly advantageous, with excellent tube links such as Gunnersbury Station (District and Mildmay lines) just a stone throw away, ensuring easy access to around and into central London, as well as out to Richmond. Additionally, the vibrant Chiswick High Road nearby, offering a plethora of shops, cafes, and restaurants to explore.



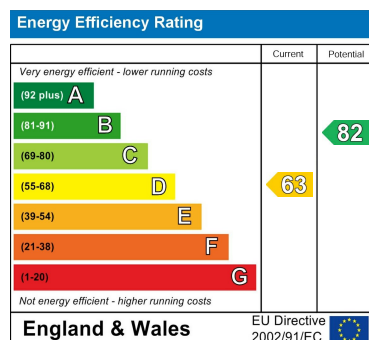


Approx. Gross Internal Floor Area 627 sq. ft / 58.32 sq. m

Illustration for identification purposes only, measurements are approximate, not to scale.
Produced by Elements Property

Council Tax Band

Energy Performance Graph

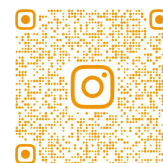


Call us on

0203 822 0111

hello@alexandersteer.co.uk

alexandersteer.co.uk



@ALEXANDERSTEERPROPERTY

Agents Note: Whilst every care has been taken to prepare these particulars, they are for guidance purposes only. All measurements are approximate and are for general guidance purposes only and whilst every care has been taken to ensure their accuracy, they should not be relied upon and potential buyers are advised to recheck the measurements.

ALEXANDER STEER
Estate Agents